

- ✓ Pre-fabricated equipment enclosure minimizes onsite construction
- ✓ Ideal for Design-Build Projects
- ✓ Designed specifically for Intuitech pilot modules but can be adapted for other equipment
- ✓ Standard design complies with 2018 IBC for wind load, snow load, and seismic conditions for most locations
- ✓ Integrated piping and electrical corridor below floor level for connecting equipment
- ✓ Exterior electrical disconnect panel allows for a single electrical connection
- ✓ Interior electrical distribution panel with NEMA 4 rating



- ✓ Washdown-rated LED interior lighting
- ✓ Outdoor-rated LED exterior lighting
- ✓ Structural members constructed of hot-dipped galvanized steel for durability
- ✓ Walls and ceiling constructed of architectural metal-clad insulated panels
- ✓ Insulated floor with slip-resistant seamless Vinyl covering
- ✓ Optional laboratory module includes cabinets, chemically resistant countertop with 120V outlets, sink, and water heater

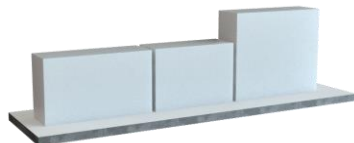
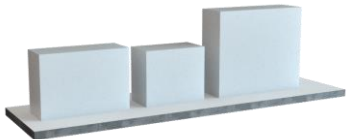
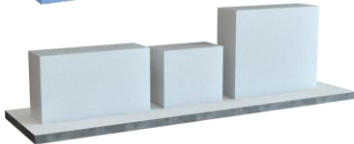


All information presented in this data sheet is for configuration code E401112-2ED-0SD-1PS-HVAC-SVN. See ordering section for other configurations.

Specifications

Outside Dimensions	42.9 X 11.0 X 11.5 ft	13062 X 3353 X 3508 mm
Inside Dimensions	39.0 X 10.0 X 10.0 ft	11887 X 3048 X 3048 mm
Shipping Dimensions	41.8 X 11.0 X 11.5 ft	12717 X 3353 X 3508 mm
End Door Clearance Width	70.5 in	1791 mm
End Door Clearance Height	95.2 in	2418 mm
Enclosure Empty Weight	25500 lbs	11567 kg
Maximum Equipment Weight	40000 lbs	18144 kg
Snow Load Design	75 lbs/sf (ground), 55 lbs/sf (flat roof)	
Wind Load Design	135 mph (3 sec gust, ultimate basis), Exposure Category C	
Seismic Design	Ss:1.5, S1:0.6, Sds:1.2, Sd1:0.68, Class:D	
Electrical Supply	Single Phase	
Voltage	240 / 480 V	
Frequency	60 Hz	
Maximum Current	62.5 / 31.2 A	

Equipment Configuration



A standard 40 foot (12.2 m) enclosure will accept the following common configurations. Contact Intuitech for other configurations.

10 GPM (38 L/min) Systems

- Flocculation/Sedimentation Module
- Ozonation Module (1 train)
- Granular Media Filtration Module (4 filters)

- Dissolved Air Flotation Module
- Ozonation Module (1 train)
- Granular Media Filtration Module (4 filters)

- Flocculation/Sedimentation Module
- Granular Media Filtration Module (4 filters)
- Laboratory Module

- Dissolved Air Flotation Module
- Granular Media Filtration Module (4 filters)
- Laboratory Module

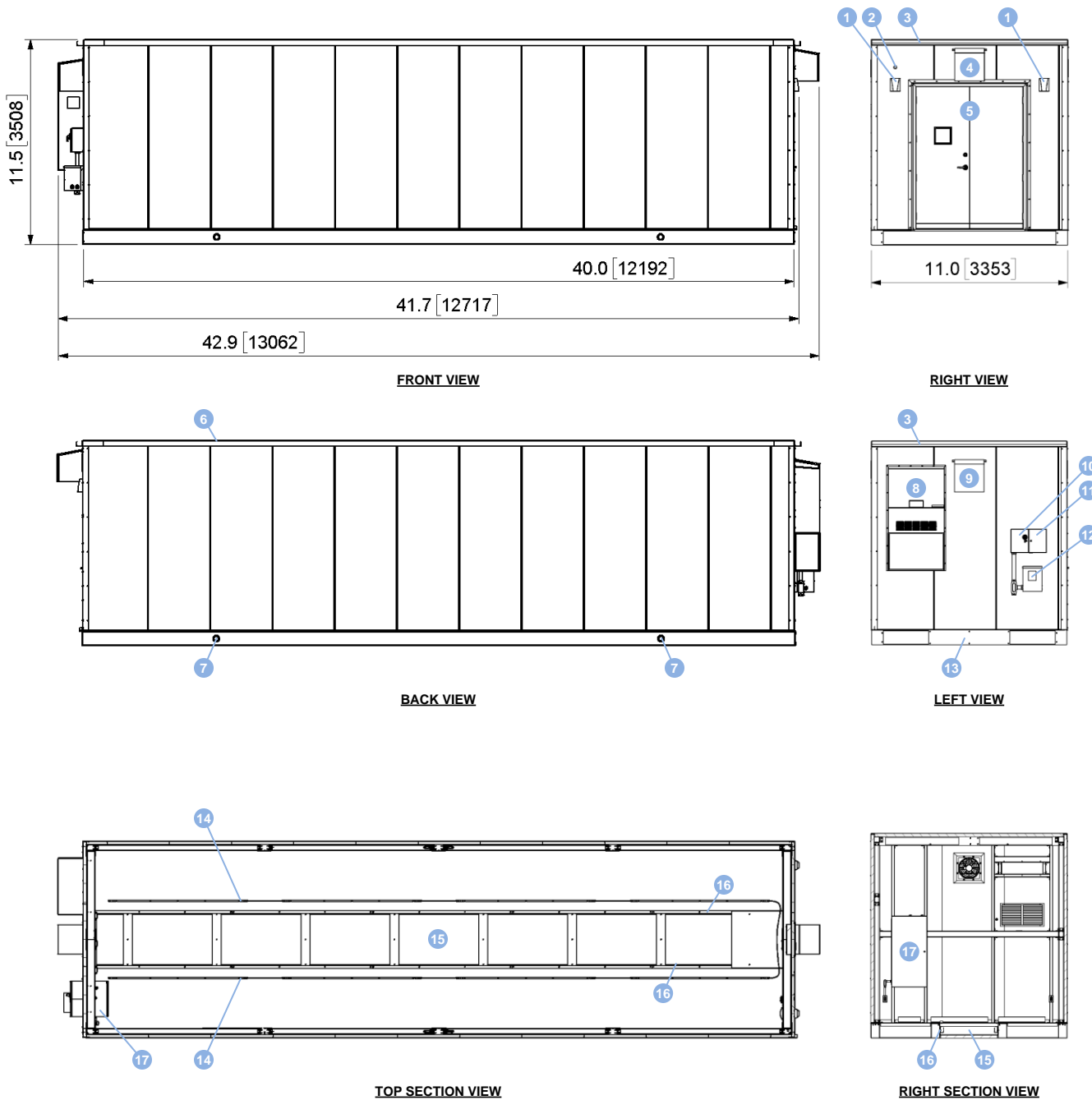
- Flocculation/Sedimentation Module
- Dissolved Air Flotation Module
- Granular Media Filtration Module (4 filters)

50 GPM (190 L/min) Systems

- Flocculation/Sedimentation Module
- MF/UF Module



General Arrangement Drawings



1	Exterior Lighting
2	Alarm Beacon
3	Rain Gutter
4	Hooded Air Intake
5	Entry / Egress Door
6	Membrane Roof

7	Lifting Point
8	HVAC Unit
9	Hooded Exhaust Fan
10	Electrical Disconnect Panel
11	Signal Panel
12	Transformer

13	Piping Connection Port
14	Interior Lighting
15	Piping Corridor (below floor)
16	Elec. Corridor (below floor)
17	Electrical Distribution Panel

Dimensions: feet [mm]

Options



HVAC

Wall-mount HVAC unit including a 2.5 ton air conditioner, a 5 kW heater, and a barometrically-operated fresh air damper capable of introducing outdoor air at a flow rate of 300 CFM (510 m³/hr), complying with IMC 2015 for occupied spaces.



SVN

Supplemental ventilation system includes a variable speed exhaust fan with a maximum flow rate of 1350 CFM (2294 m³/hr), a removable/washable intake screen, barometrically-operated intake and exhaust shutters, and stainless steel rain hoods.



PLC

Programmable Logic Controller (PLC) and Human-Machine Interface (HMI) installed in the power distribution panel. Used for automating enclosure control functions such as closing an inlet valve when a pipe fails or turning on the supplemental ventilation fan when an ambient gas concentration exceeds defined safety limit.



CSB

Cellular signal booster/repeater and omnidirectional antenna installed on the interior and a Yagi directional antenna installed on the exterior. The metal-clad wall panels of the enclosure reduce cellular signal strength significantly. This option will boost the cellular remote access units on pilot modules as well as personal cell phones.



LAB

Laboratory grade cabinets with a chemical resistant phenolic countertop, sink and faucet, under-the-sink electric water heater, and GFCI-protected power strip. Standard lengths are 4 feet (1219 mm), 6 feet (1829 mm), and 8 feet (2438 mm) long.



FWS

Eight 46 inch (2268 mm) long by 12 inch (305 mm) deep stainless steel shelves attached to the interior walls. Shelves fold flush into wall when not in use.



SMD

Smoke detector triggers an audible alarm when smoke is detected. When included with the PLC option the pilot skids will automatically shutdown and an alarm will be annunciated on the exterior beacon and transmitted by text or email.



OZD
HSD
CLD

Gas detectors display ambient gas concentration. When included with the SVN and PLC options and the concentration exceeds the exposure limit, the pilot skids will shutdown, the exhaust fan will run at the maximum flow rate, and an alarm will be annunciated on the exterior beacon and transmitted by text or email.

Ordering

Our standard pilot enclosure can be configured as shown below. It can also be customized to meet specific requirements for an additional cost. Please contact Intuitech for more information.

